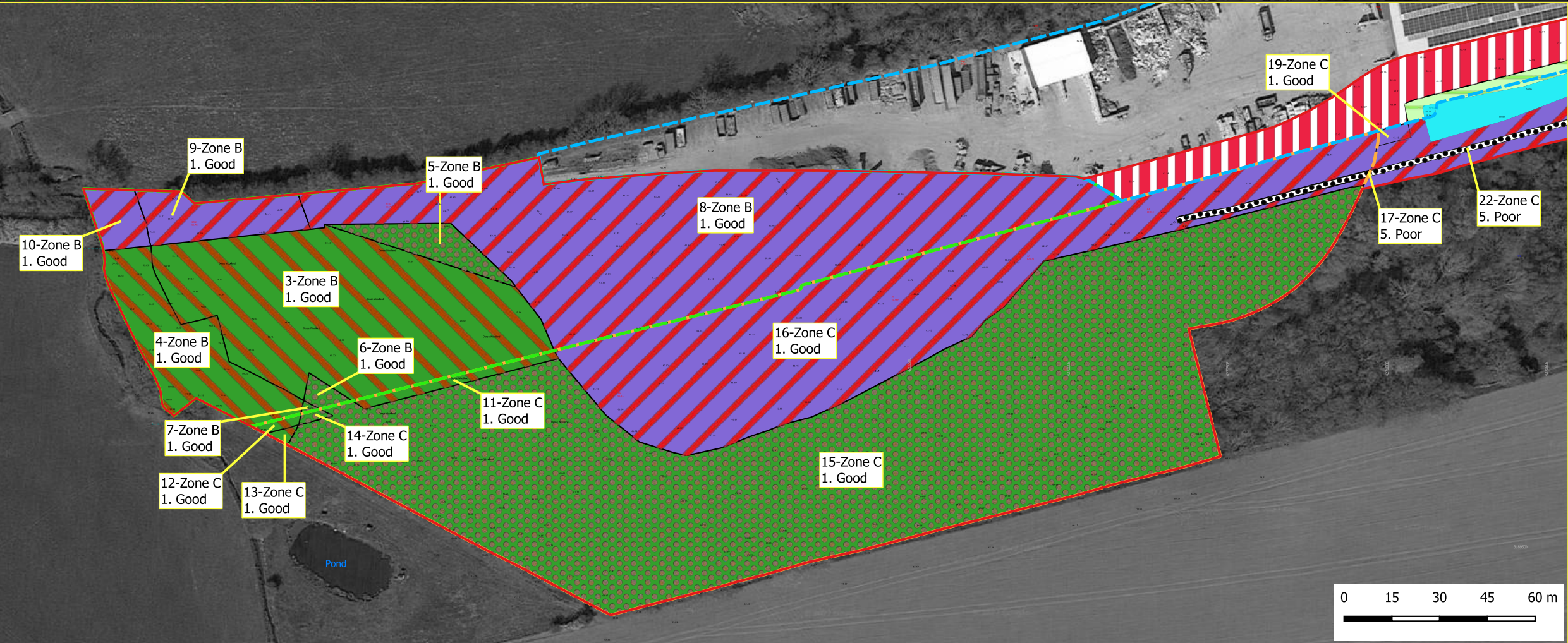
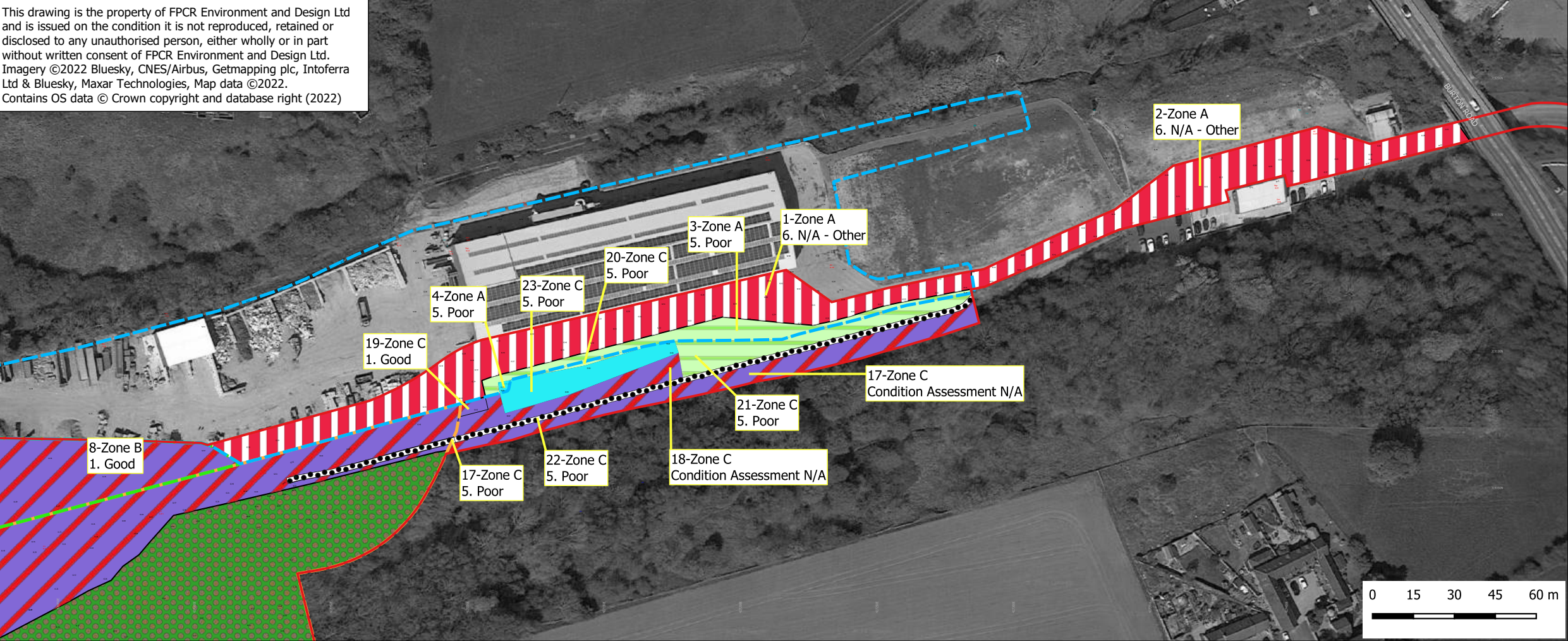


This drawing is the property of FPCR Environment and Design Ltd and is issued on the condition it is not reproduced, retained or disclosed to any unauthorised person, either wholly or in part without written consent of FPCR Environment and Design Ltd. Imagery ©2022 Bluesky, CNES/Airbus, Getmapping plc, Intoferra Ltd & Bluesky, Maxar Technologies, Map data ©2022. Contains OS data © Crown copyright and database right (2022)



- Material Recovery Facility (MRF) Boundary
- Aggregate Recovery Facility (ARF) Boundary
- Energy Recovery Facility (ERF) Boundary

Habitats

- Bramble scrub
- Developed land; sealed surface
- Mixed scrub
- Other woodland; broadleaved
- Other neutral grassland
- Ponds (Non- Priority Habitat)
- Wet woodland

| | | | |
|-----|----------|---------------------------|---------|
| A | 23.09.22 | Amend to revised red line | NJL/NJL |
| - | 12.06.22 | Initial copy | NJL/NJL |
| rev | date | comment | drn/chk |



client
R&P Clean Power Limited

project
Swadlincote Resource Recovery Park (SRRP)

drawing title
**BNG ASSESSMENT
SRRP SITE BASELINE HABITATS**



drawing / figure number
7233-ES-8.10-01

Date printed
23/9/2022